



SG RECHARGEABLE MOTOR

Programing Instructions

04/05/2016

TECHNICAL SPECIFICATIONS

MOTOR INFORMATION



1. ENSURE MOTOR IS PROTECTED. ANY DAMAGES DURING TRANSPORTATION, STORAGE, INSTALLATION OR MISUSE CAN CAUSE THE MOTOR TO NOT WORK PROPERLY.
2. CHARGE THE MOTOR EVERY 6 MONTHS TO ENSURE OPTIMAL PERFORMANCE.
3. IF THE BATTERY CHARGE IS AT A LOWER LEVEL, THE MOTOR WILL BEEP 10 TIMES TO PROMPT IT NEEDS TO BE CHARGED.

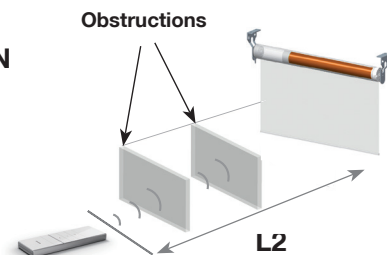
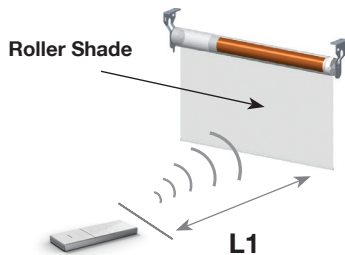


Programming resides with the motor. Each motor can store up to 20 different channels. If more channels are needed each subsequent remote programed will be able to copy any of the 20 assigned channels.

CONTROL RANGE






SIGNAL STRENGTH AND RANGE MAY VARY DEPENDING ON THE ACTUAL ENVIRONMENT.




	L1 Open Area	L2 With Obstructions	Emission Frequency
12V	200m	35m	433.92/868 MHz

MOTOR RESET

Motor will be shipped in factory default mode. If reset is required follow these instructions:

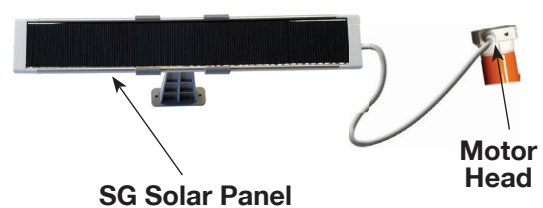
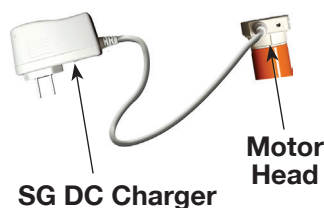
Motor can be set to factory default mode by holding down the **motor setting button**  until the **motor jogs 3 times**. When the **motor setting button**  is released the motor will **beep 3x**  indicating it has been reset.

RECHARGING THE MOTOR

To recharge the motors battery connect the SG DC charger to the motor head **charging jack**  and plug the charger into a standard electrical outlet. When the battery is fully charged the indication light on the charger will switch from red to green. You can also use the SG Solar Panel to keep the battery constantly charged while exposed to sunlight.



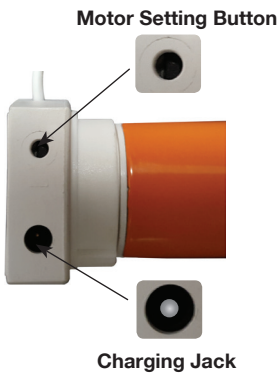
IF PURCHASING MORE THAN ONE CHARGER, PLEASE ENSURE THE COLOURED MARKING ON THE CHARGER & MOTOR MATCH.



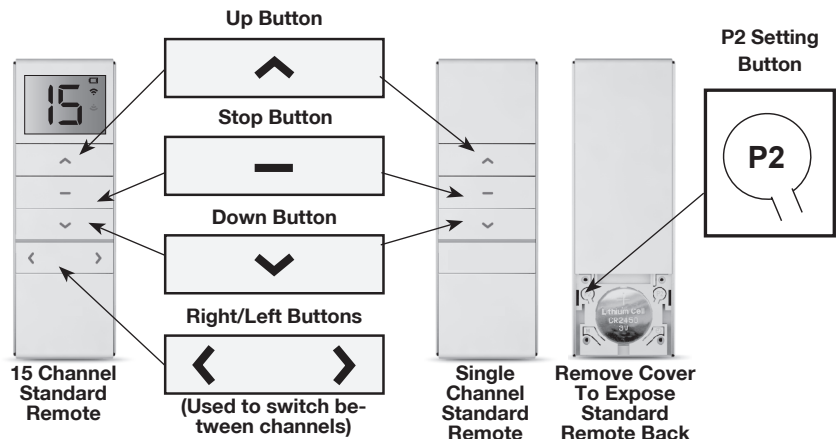
STEP 1: PREPARING FOR PROGRAMING

BUTTON INFORMATION

MOTOR BUTTON LAYOUT



REMOTE BUTTON LAYOUT



BEFORE YOU BEGIN:



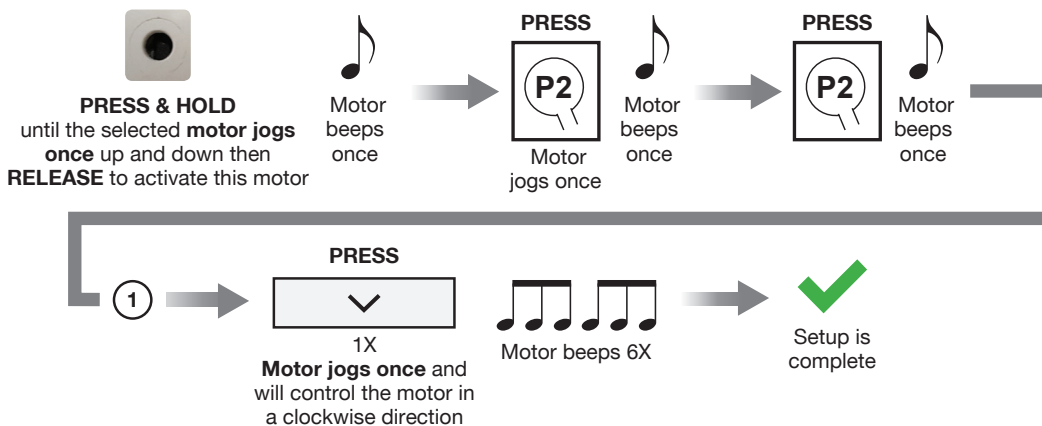
1. Motors are shipped in factory default mode without limits set.
2. Channel "0" cannot be programed on a multi channel remote. It is intended to be a master channel for all motors.
3. On a 15 channel remote, select the intended channel before activating wake-up mode, basic or advanced program settings.

WAKE-UP MODE (Must Be Done Before Basic & Advanced Programing)

Required to make the connection between the remote channel and the motor. During each of the following settings the time between each operation must be shorter than **6 seconds**, otherwise the program will be canceled, and the motor will be back in default mode. Follow the steps below to wake-up the motor.

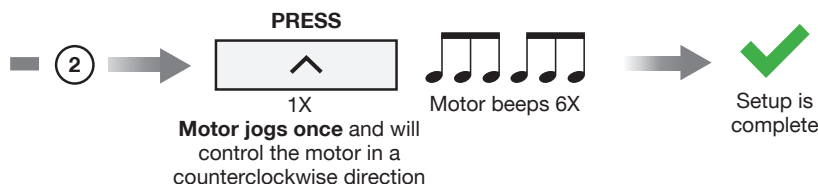


NO ASSIGNED LIMITS IN WAKE-UP MODE.



Test shade direction using or . Use to prevent shade fabric and bottom bar from crashing into the valance or unrolling from the tube.

Changing motor direction: Repeat the wake-up mode steps above and use step **2** as shown below to change the motor direction in the last step.

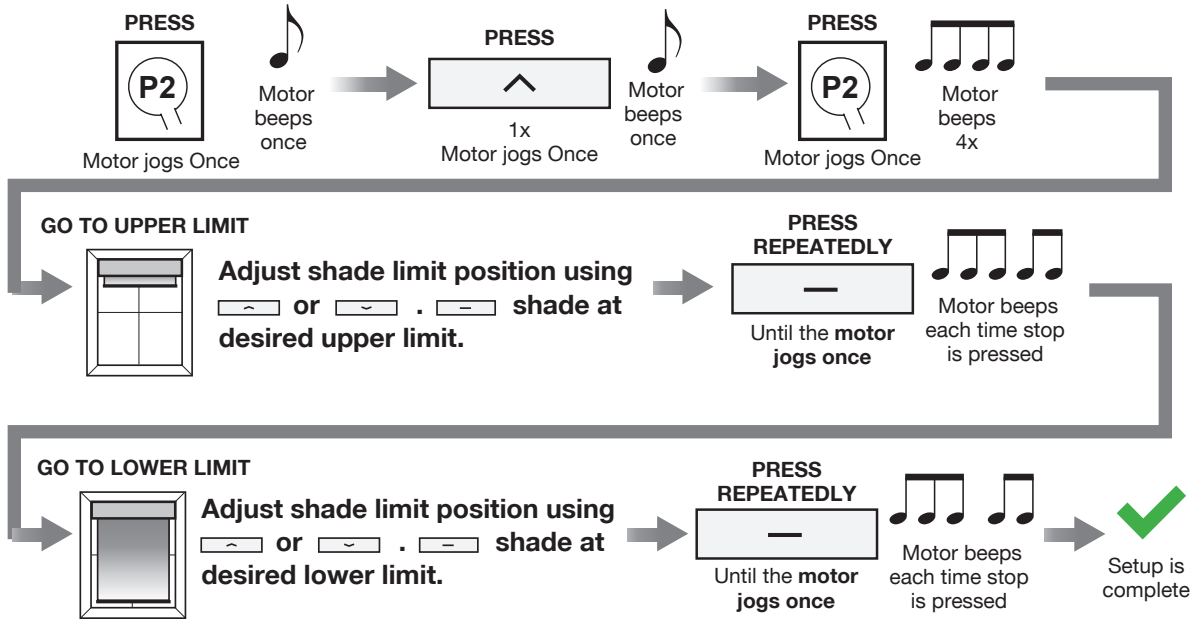


STEP 2: BASIC PROGRAMING

SETTING MOTOR LIMITS

Allows you to set 2 positions, an upper and lower position for the shade per channel.

During limit setting, the time between two operation must be shorter than 2 minutes, otherwise the program will be canceled, and the motor will be back in wake-up mode. Follow the steps below to set motor limits.



Test shade direction using or . If limits were not setup properly use to prevent shade fabric and bottom bar from crashing into the valance or unrolling from the tube.

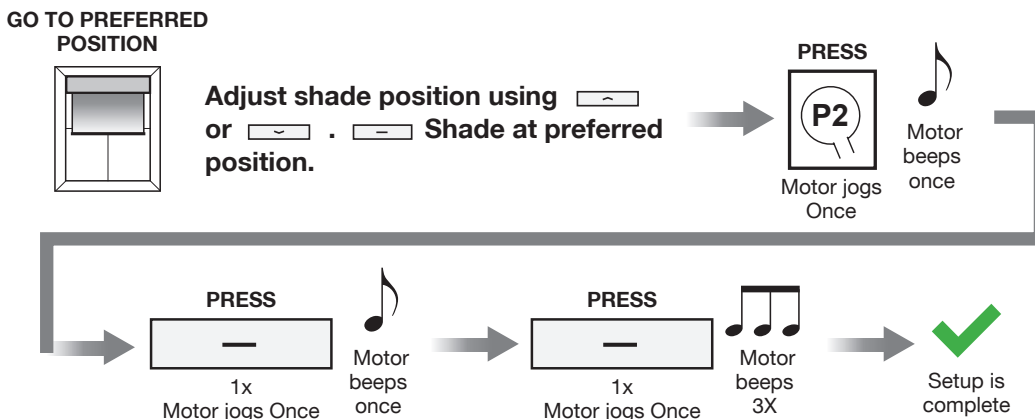
STEP 3: ADVANCED PROGRAMING

SETTING A PREFERRED POSITION

Allows you to set a third limit position for the shade per channel. Follow the steps below to set a preferred position.



WHILE IN TILT FUNCTION SHADE WILL GO TO LOWER LIMIT FIRST AND THEN PROCEED TO THE PREFERRED POSITION.



When setup is complete, press and hold the stop button to go to the preferred shade position. Follow the steps above to program different preferred positions to separate channels on a 15 channel remote.

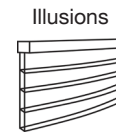
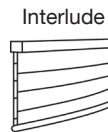
STEP 3: ADVANCED PROGRAMING (Continued)

SETTING OR REMOVING TILT MODE

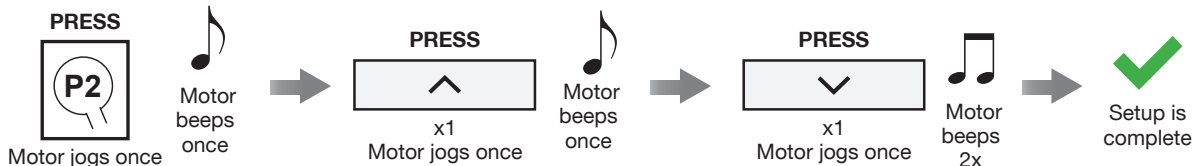
Tilt mode is used to move the shade in small increments for fine adjustment. It is most effective when programed with a standard remote (button remote).

Follow the steps below to set the shade in tilt mode or remove shade from tilt mode.

To be used with Interlude or Illusions shades.



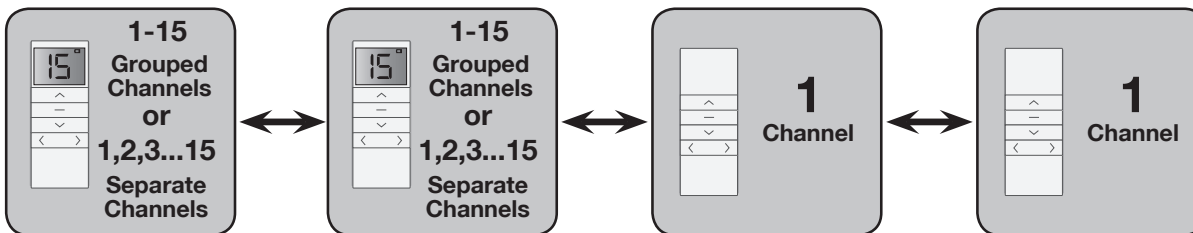
TILT MODE WILL REMAIN ACTIVE IN ALL MODES UNLESS REMOVED



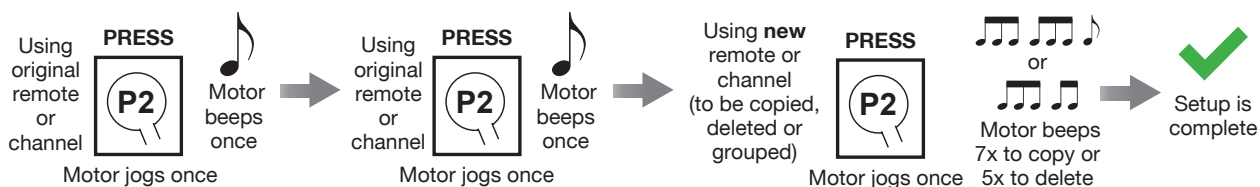
When setup is complete press or down repeatedly for fine adjustment. To move shade automatically press and hold or .

COPYING, DELETING OR GROUPING CHANNELS (Single or 15 Channel Remote)

Remote Scenario Chart



The remote scenario chart above outlines different ways to copy, delete or group channels using separate remotes. **Separate channels can also be programed this way within one 15 channel remote. Follow the steps below to copy, delete or group channels.**



DELETING ALL MOTOR LIMITS

This mode is used to delete all the limits setup in the motor using the originally programed remote. **Follow the steps below to delete all the motor limits.**



AFTER ALL LIMITS ARE DELETED THE MOTOR WILL DEFAULT TO WAKE-UP MODE. ALL COPIED CHANNELS ON OTHER REMOTES ARE SYNCED AND UPDATED WITH THE ORIGINAL MOTOR UNLESS DELETED.

