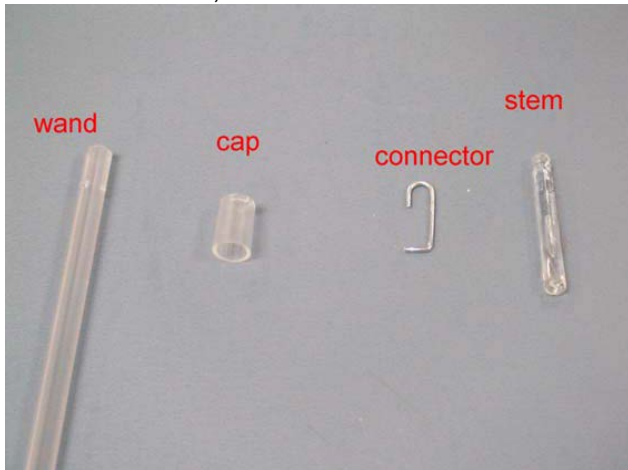


## TASK: Wand Assembly – 1” Cordless Horizontal Aluminum

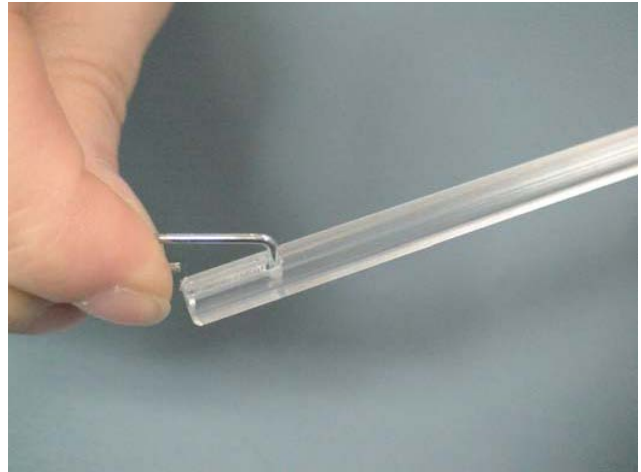
Use If/When: Cordless Wand Assembly

Tools Needed: N/A

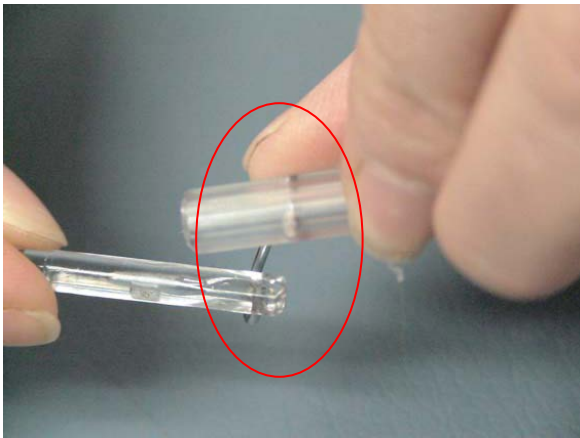
1. The wand should be taped to the top of dust cover when the blind is received. If the wand assembly is apart, you will need: wand, cap, wand connector, and wand stem.



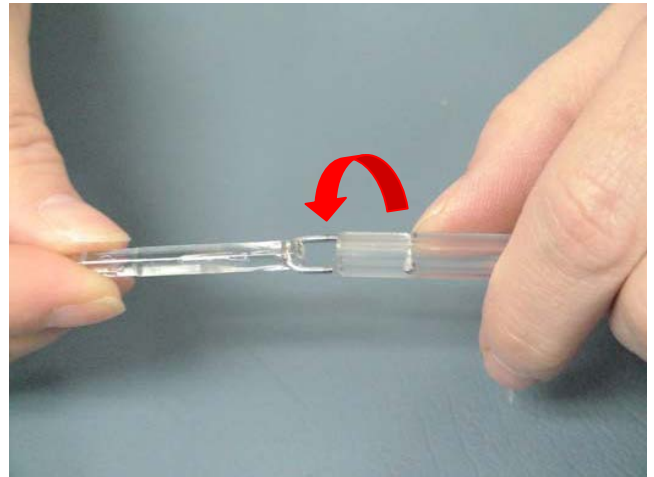
2. Insert wand connector into the end of the wand. One side of the wand will have an indent for the connector to lie in.



3. Insert wand stem into the connector. Make sure that the end with the smooth sides and circular hole is inserted into the connector. (Use your thumb to hold the connector in the wand.)



4. Once wand stem is on the connector, move the connector so it is even with the end of the wand.

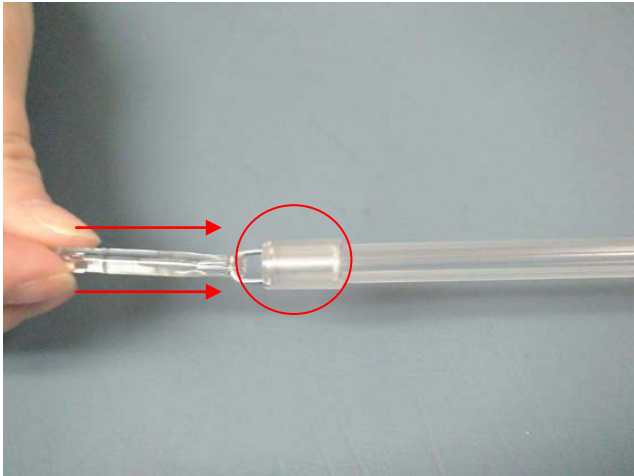


## TASK: Wand Assembly – 1” Cordless Horizontal Aluminum

Use If/When: Cordless Wand Assembly

Tools Needed: N/A

5. Slide the cap over the end of the stem. Align the indents on the cap with the wand connector. Slide the cap over the wand connector so that it is seated on the wand.



6. To install the wand, apply firm pressure on the stem until it makes 2 snapping noises. This will make sure the tilter stem is fully inserted into the tilt mechanism.

**Note:** If the stem releases when pulled, it is not fully inserted.

